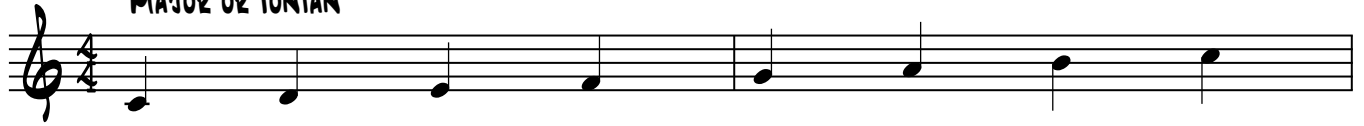


TETRACHORDS AND SCALES

FITZ

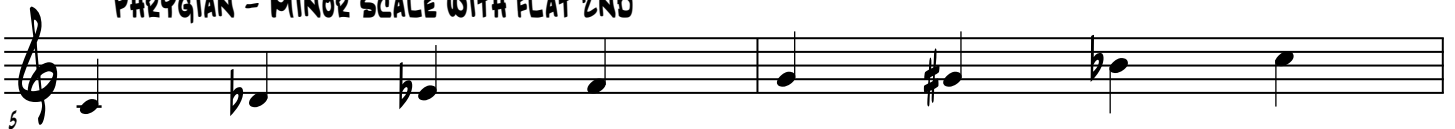
MAJOR OR IONIAN



DORIAN - MINOR SCALE WITH NATURAL 6TH



PHRYGIAN - MINOR SCALE WITH FLAT 2ND



LYDIAN - MAJOR SCALE WITH SHARP (AUGMENTED) 4TH



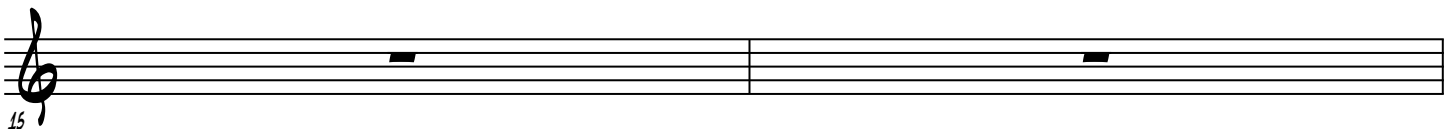
MIXOLYDIAN - MAJOR SCALE WITH A FLAT (MINOR) 7TH



AEOLIAN - (NATURAL MINOR)



LOCRIAN - MINOR SCALE WITH FLAT 2ND AND FLAT (DIMINISHED) 5TH



TETRACHORDS AND SCALES

2

ALTHOUGH THERE ARE DIFFERENT GREEK TERMS FOR TETRACHORDS,
WE WILL USE THESE MODERN TERMS

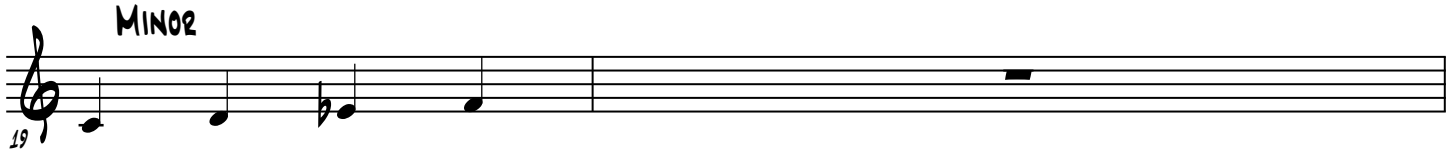
MAJOR



17

A musical staff in treble clef showing a major tetrachord. The notes are G4, A4, B4, and C5, each followed by a whole rest. The staff is divided into two measures by a bar line.


MINOR



19

A musical staff in treble clef showing a minor tetrachord. The notes are G4, A4, Bb4, and C5, each followed by a whole rest. The staff is divided into two measures by a bar line.

PHRYGIAN



21

A musical staff in treble clef showing a Phrygian tetrachord. The notes are G4, Ab4, Bb4, and C5, each followed by a whole rest. The staff is divided into two measures by a bar line.

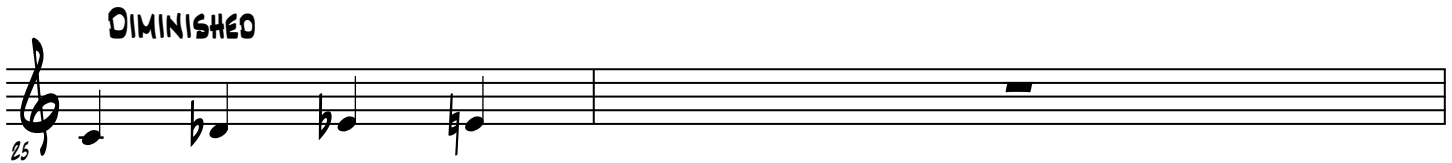
AUGMENTED



23

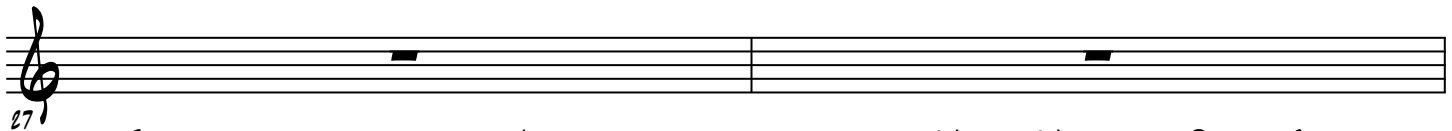
A musical staff in treble clef showing an augmented tetrachord. The notes are G4, A4, B4, and C#5, each followed by a whole rest. The staff is divided into two measures by a bar line.

DIMINISHED



25

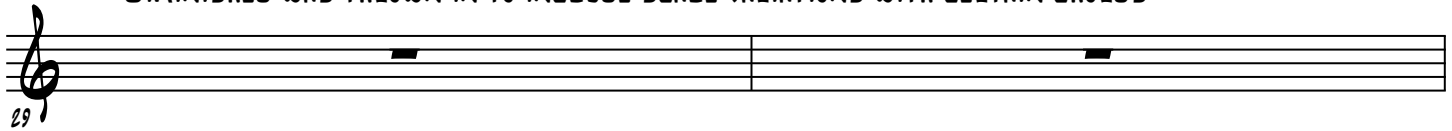
A musical staff in treble clef showing a diminished tetrachord. The notes are G4, Ab4, Bb4, and C#5, each followed by a whole rest. The staff is divided into two measures by a bar line.



27

An empty musical staff in treble clef, divided into two measures by a bar line.

THE COMBINATION OF THE FIRST 4 TETRACHORDS CAN MAKE UP ALL MAJOR, MINOR AND DORIAN SCALES.
DIMINISHED WAS THROWN IN TO INCLUDE SCALE VARIATIONS WITH CERTAIN CHORDS



29

An empty musical staff in treble clef, divided into two measures by a bar line.



31

An empty musical staff in treble clef, divided into two measures by a bar line.